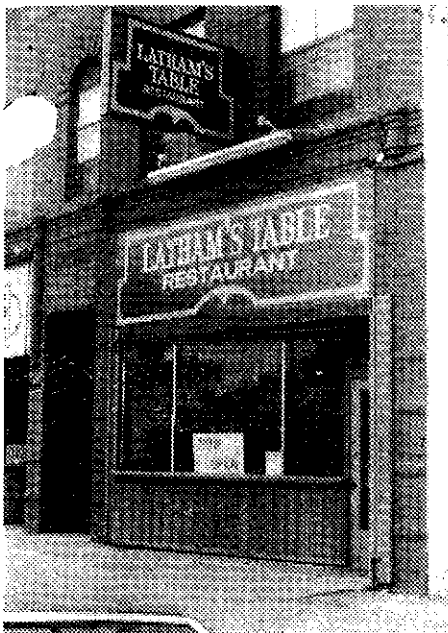


# Happenings\*

Minnesota Community Corrections Association

## Review Of Latham's Table

Reprinted from Mpls. Star/Trib.  
From column written by Karin Winegar  
"Around Town".



In some of the ritzier places in town, dessert will cost more than the price of an entire dinner at Latham's Table.

The Table's prices and portions are good news in time of economic anxiety.

So is the sit-right-down warmth of this neighborhood family restaurant.

Latham's Table, 3000 S. Lyndale Ave., is a project of Freedom House, a non-profit chemical dependency rehabilitation program.

The small dining room is filled with weathered wood and farm artifacts from a 139-year-old barn in Hutchinson that was dismantled by Freedom House members. Latham's is managed by the executive director of Freedom house, Frank Cison Jr. (whose father cooks occasionally at the Table), and most of the employees are from Freedom House. The menu is strictly

American Farm Hand: homemade soups, sandwiches with mashed potatoes and gravy, and full dinners from soup to ice cream for less than \$6.00

The namesake for the 10-month-old establishment is Augustus B. Latham, an original partner in the realty firm of White and Latham. Latham and friends divved up the city lake area known as the William Lyndale Farm, and constructed the building back in 1888.

★ ★ ★ ★ ★ ★ ★ ★ ★ ★ ★ ★

## FREEDOM HOUSE: Dreams Do Become Reality

Freedom House, a therapeutic community for chemically dependent offenders had its beginning in an old house in South Minneapolis in 1973.

Several young men, tired of their life of crime and drugs, decided to live together and help each other "stay straight". A highly structured program evolved from this informal beginning. In 1974, the Law Enforcement Assistance Administrator provided a 3

year start up grant to the program. Since then purchase of service contracts have been developed with state, local and federal correctional agencies.

Freedom House serves as an alternative to prison and the workhouse and provides the environment and confrontation necessary to "turn lives around."

Freedom House has long been interested in developing an Industries Program to serve as

a work training site for its residents and provide an additional source of income for the program.

In 1979, the idea for Latham's Table restaurant was born. Armed with an 1888 building at 3008 Lyndale Avenue South and the promise of an old chef and excellent food, planning began. First was involvement of the Board of Directors and then a fund

Cont. On Page 5

## Position Available

**Corrections Group Worker:** Develop and implement treatment plan for residents of Bremer House. Bachelor's Degree in Human Services and preferably two years employment in a correctional setting with group work skills. A program of Amherst H. Wilder Foundation, equal opportunities employer. For additional information contact James T. Brown, 222-4471.

★ ★ ★ ★ ★ ★ ★ ★ ★ ★

## People Happenings

The MCCA would like to extend it's sympathy to the Simon Davidson family and the Eden House staff. Mr. Davidson, who recently passed away, had been with the Eden House Program for the past 6 months, working as a counselor. Previously he had been working in the treatment field for a number of years. His work in the field was deeply appreciated by those he came in contact with and his presence will be truly missed.

**Judith Von Hillyer** is the new program director of the Exchange Program and Project Intercept, the adolescent assessment project for Ramsey County. Ms. Hillyer has a masters degree in Health Education and a bachelors degree in Psychology. Her past experience includes being supervisor for the Army's Chemical Dependency program in

Europe, as a civilian. She then did nursing supervision in detox centers for 2 years. She taught chemical dependency and psychiatric nursing at St. Mary's Jr. College and after completing the program at the University of Minnesota in Chemical Dependency Administration she joined the Granville staff as program director of the two programs.

**Margie Lewis** has assumed the position of Treatment Specialist at Directions for Youth in St. Paul. A certified Chemical Dependency Counsellor, Lewis has been a counselor at Turning Point in Minneapolis for the past three years.

**Iva Hawkins** is the new counselor at Turning Point. On April 13, she moved from her previous position as Administrative Assistant at the Rape and Sexual Assault Center. Iva has also worked as a secretary at Genesis II and is currently working toward her certification in chemical dependency counseling.

**Eleftherios Papageorgiou** has taken over the Executive Directors position at Omegon. Originally from Athens, Greece, he has had experienced working with Shanti House and St. Mary's Hospital and most recently has been in private practice doing family therapy. He is also presently working with the U of M with the Sexual Awareness Reassessment program.

Harry Kramer has resigned as a member of the MCCA Board of Directors. Harry has been an active member of the MCCA and the Board of Directors for a number of years and has found it necessary to resign due to other pressing time committments. We would like to extend our thanks for all the effort Harry has put forth on behalf of the MCCA. His active participation will be missed.

## Baker-Kent Named Woman Of The Year

**Lurline Baker-Kent** was named 1981 Woman of the Year at the 33rd Annual Duluth Day Luncheon, held May 18, 1981, at the Normandy Inn, Duluth, Minn.

Baker-Kent is the director of Women's Community Service Restitution Program at Arrowhead Regional Corrections.

Chosen by a committee, representing 5 city women's organizations, Baker-Kent is a former member of the Duluth School Board and the Governor's Council on the Economic Status of Women. She is the president of the local chapter of the N.A.A.C.P.

She is on the Minnesota State Advisory Committee to the U.S. Civil Rights Commission, is a member of the United Way Grant Receiving Panel and a trustee of WDSE-TV.

★ ★ ★ ★ ★ ★ ★ ★ ★ ★

**Correction:** The MCCA phone number was listed incorrectly in the March/April Happenings. The correct number is listed below.

## \*Happenings

The opinions expressed in the Happenings are those of the contributing writers. Readers are encouraged to respond to the content of this newsletter and to write on topics of interest to its readers. The staff reserves the right to edit submitted articles. Copy deadline is the 25th of odd-numbered months.

Members of the newsletter committee are:  
**Dale Fisher--editor**  
**Mia Olsen**  
**Karole Williams--Board of Directors LLason**

**Our New Address and Phone Is:**  
**666 Marshall Avenue**  
**St. Paul, MN 55102**  
**292-1131**

# Board Of Directors

DAN CAIN - Vice-Chairman  
EDEN HOUSE  
1025 Portland Avenue  
Minneapolis, MN 55404  
338-0723 (office)

BARBARA CHESTER  
DEPT. OF CRIMINAL JUSTICE  
ST. CLOUD STATE UNIVERSITY  
St. Cloud, MN 56301  
255-4101

GAIL JOHNSON - Chairperson  
FREEDOM HOUSE  
3020 Lyndale Avenue  
Minneapolis, MN 55408  
823-6610

JEFF MARTIN - Secretary  
DEPARTMENT OF CORRECTIONS  
430 Metro Square  
St. Paul, MN 55102  
296-1891

JOHN POUPART  
ANISHINABE LONGHOUSE  
1016 Newton Ave. N  
Minneapolis, MN 55412  
521-2251

ROBBIE ROBINSON  
180 DEGREES, INC.  
236 Clifton Ave.  
Minneapolis, MN 55403  
870-7227

MATT SMREKAR - Treasurer  
HENN. CTY. PAROLE SERVICES  
1800 Chicago Avenue  
Minneapolis, MN 55404  
348-4039 (office)

KAROLE WILLIAMS  
OPERATION DENOVO  
321 South Third Street  
Minneapolis, MN 55415  
336-1731 (office)

DICK WILLIAMS  
REENTRY SERVICES  
532 Ashland  
St. Paul, MN 55102  
292-1466 (office)

TOM ZOET  
WASHINGTON COUNTY COURT SERVICES  
Wash. Co. Courthouse  
Stillwater, MN 55082  
439-3220 Ext. 141

## We Want You To Know

Dear Fellow Members:

The Board of Directors has been busy reorganizing MCCA into a volunteer association and developing goals and objectives for 1981-82.

As part of our planning, we feel it is critical to our growth that members take responsibility for active participation on committees.

The following committees are seeking additional members:

- Membership
- Services and benefits which includes sub-committees such as Newsletter, and insurances
- Economic Viability
- Special concerns which includes sub-committees such as Sentencing Guedelines, Legislative, Minority and Ad Hoc Committees

If you have an interest in serving on any of these committees, please write to our office at 666 Marshall Avenue, St. Paul, MN 55104. Our organization is only as strong as its membership.

**Best Wishes,  
Gail Johnson,  
President**

**MINNESOTA COMMUNITY CORRECTIONS ASSOCIATION**  
666 Marshall Avenue  
St. Paul, MN 55102

NAME: \_\_\_\_\_

PROGRAM/AGENCY: \_\_\_\_\_

WORK ROLE: \_\_\_\_\_

WORK PHONE: \_\_\_\_\_

ADDRESS: \_\_\_\_\_ ZIP: \_\_\_\_\_

ADDRESS SHOWN IS: \_\_\_\_\_ HOME \_\_\_\_\_ WORK

INDIVIDUAL MEMBERSHIP: \_\_\_\_\_ \$15 INDIVIDUAL SUSTAINING MEMBERSHIP: \_\_\_\_\_ \$25

INDIVIDUAL PATRON MEMBERSHIP: \_\_\_\_\_ \$50 PROGRAM MEMBERSHIP: \_\_\_\_\_ \$100

PROGRAM SPONSORING MEMBERSHIP: \_\_\_\_\_ \$300

Make checks payable to MCCA

# The Exchange Program

The Exchange Program, operating in St. Paul at 54 West Exchange Street, is a chemical abuse/dependency outpatient program offering services to persons in Ramsey County.

The Exchange program's outpatient treatment consists of 3 phases: Phase I: 4 weeks long, groups 4 evenings per week. Phase II: 8 weeks, with groups 2 or 3 evenings per week, depending upon the needs of the client. Women clients in Phase II attend a special women's group on Wednesday evening. Phase III: 4 weeks, group 1 evening per week, during this phase clients make specific aftercare plans and are introduced to the Exchange Program alumni.

The Exchange also serves adolescents two evenings per week in an extended treatment program.

Many referrals come from programs and agencies in the community. Anyone wishing to make referrals can contact the Exchange Program at 291-2800.

\*\*\*\*\*

# Eden House-10th Anniversary

Eden House is in the process of planning the celebration of their 10th anniversary. There are plans for a day long series of events which will include a 10 kilometer run and picnic. The event will take place October 3, 1981 and further details will be published in the next issue of the Happenings. Further information and details as the planning progresses will be available from Dan Cain - 338-0723.

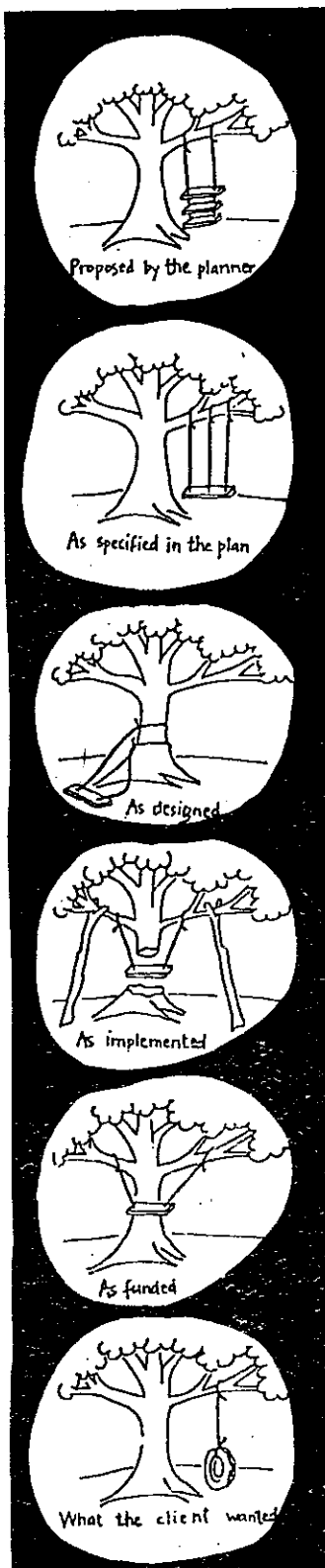
Eden House opened in 1971 as a long-term residential, Therapeutic Community for drug abusing offenders. Since that time, several other components have been added. The Eden Day program is an outpatient program for adults. Eden Youth, also on an outpatient basis, with the most recent expansion of the Eden House Program being the opening, in 1979, of the Eden Youth residential program.

In addition to the above programs Eden House has contributed to the Corrections Community by producing, successful, com-

petent graduates who have gone on to work in other local programs or in some instances have started new programs.

Eden House began with an idea that has grown and progressed over the past 10 years into a viable resource, providing services on many levels to persons experiencing problems related to their chemical abuse.

\*\*\*\*\*



# New Members

Barbara Chester  
St. Cloud University

Cherie Lynn Claussen  
Mankato—Student

Michael Downey  
Todd/Wadena Comm. jCorrections

Jim Ganmitz  
Washington County Corrections

Taloe Starr Hoium  
Aide to Congressman Vin Weber

Rodney Johnson  
Wilder Foundation C.A.P.

Marilyn Krueger  
Portland House

Mike McGrane  
Wilder Foundation C.A.P.

David Morin  
M&R IV

Cont. On Page 6

\*\*\*\*\*

**Women Helping Offenders** has been recently refunded by the Minnesota Legislature through the Department of Corrections for 1981-83 Biennium. This assures continuance of full program services, including the areas of educational planning and job development for ex-offenders in the state of Minnesota.

\*\*\*\*\*

## Youth Program Reorganized

Turning Point has assumed the administration of **Directions for Youth**, a residential treatment program for juveniles located at 1089 Portland, St. Paul. The program was established in 1975 and is now being reorganized. Margie Lewis, treatment specialist, reported that the program is based on the family concept, using group confrontation with "Tough Love".

The youth, ages ten to sixteen, will stay at least six months with emphasis on involvement of the family. Lewis emphasized the program is not primarily oriented toward chemical dependency and is not limited to black clients.

## Sobering Cars

Inebriated again, the gentleman emerges from his favorite tavern, gets into his car, and turns the key. He starts the engine and drives away, forgetting his required drunk driving test.

But the car has no intention of cooperating. As the drunken driver picks up speed, the car's emergency flashers blink on and off, and the horn honks once a second. Aware that he can't escape notice, the driver pulls off the road and calls home for someone to pick him up.

In southern California, the National Highway Traffic Safety Administration is testing a Drunk Driving Warning System, a vehicle-mounted device that will be installed in the cars of repeat drunk drivers. Judges and enforcement officers are hoping the device will prove more successful than license suspension or jail sentences.

In order to prevent an equipped car from tattling on him, the driver must pass a short dexterity test before starting the engine. He must keep an indicator needle centered on a dash-mounted display by turning the steering wheel to the left or right in response to the deflections of the needle.

This test, a form of the Critical Tracking Test, requires the same responses as balancing a broomstick on your fingertip. Just as the broomstick task can be made more difficult by shortening the stick, the drunk driving test can be made stricter by speeding the rate of needle movement. The Critical Tracking Test has been used for many years to test astronauts, sailors, pilots, and others requiring deft eye-hand coordination. It is a proven measure of psychomotor performance.

And because it measures performance instead of blood alcohol content, like other tests, the warning system is more immune to individual differences in alcohol-induced impairment—and also more sensitive to other causes of impairment, such as stress or fatigue. The test measures the driver's reactions relative to his sober performance.

"We're most interested in keeping an impaired person from driving—not measuring intoxication," says Wade Allen, an engineer with Systems Technology Inc., the company that makes the device for the U.S. Department of Transportation.

Allen says the system relies on technology no more complicated than a hand calculator.

Cont. On Page 6

## (C.A.S.A.) Sponsors Training)

Hispanos en Minnesota's Chemical Abuse Service Agency (C.A.S.A.) has finalized arrangements with the Hazelden Foundation to provide a Hispanic person with a 55-week scholarship for intensive chemical dependency counseling or training.

C.A.S.A. will recruit and pre-screen interested Hispanic persons who are bilingual/bicultural based on Hazelden entrance requirements. Finalists will be sent to Hazelden for full evaluation.

The individual selected for the scholarship will receive full tuition and if the person chooses to live on the Hazelden premises, at Center City, MN (45 miles north of St. Paul), room and board will be provided. Depending on financial circumstances, a personal stipend may be offered by the Hazelden Foundation.

Entrance requirements are stringent in terms of personal commitment as well as interest and previous work in the field of C.D. The person must show the financial ability to be in training for 55 weeks in lieu of employment.

The interview process is intensive. There are psychological tests, individual and group interviews, as well as the usual repertoire of paper-work. A minimum high school diploma or equivalent G.E.D. is required as well as background in A.A., Ala-non or the like.

The first three weeks require residence on the premises, the rest of the time is optional. The training is in an isolated area and the

participant must be prepared to handle such an environment. HEM/CASA will request a 2-year contracted commitment from the individual selected to work in a treatment setting in the Metro area with Hispanics. C.A.S.A. will assist in developing the position.

Persons who qualify under the above-stated criteria wishing to apply for this training may contact:

**RICARDO FLORES, Ex. Dir.**  
**Hispanos en Minnesota**  
**(612) 227-0831 or (612)**  
**291-7403, 9:00 A.M. -**  
**5:00 P.M., Mon.-Fri.**

★ ★ ★ ★ ★ ★ ★ ★ ★ ★

**FREEDOM HOUSE Cont. From Page 1** raising campaign. Freedom House had rummage sales, ice fishing contests, food booths and Christmas tree lots. First Bank System, Dayton-Hudson, Honeywell, General Mills, Cray Research, Minnesota Community Corrections Association and Hennepin County Bar Association donated start up monies.

An old cow barn from Hutchinson, Minnesota was torn down by Freedom House residents and posts, beams and siding of the 1841 barn decorate the restaurant. Old farm implements were donated by a Thief River Falls farmer and they add a unique and comfortable touch to the restaurant.

Freedom House residents train in the restaurant every day as waiters and waitresses, dishwashers, cooks and janitors. Several residents have already obtained jobs in food services, as a result of their training at Latham's Table.

It has taken hard work, dedication and the cooperation of many people but the dream is reality.

★ ★ ★ ★ ★ ★ ★ ★ ★ ★

## MCCA Group Insurance Plan Offered To Membership For 4th Year

Small agencies frequently find it difficult to purchase group health, dental, life and disability at an affordable price. If they can afford it, coverage is generally less than adequate.

MCCA, looked into this and found under the umbrella of the Association, group coverage could be obtained at lower cost and provided better benefits. How? The answer is size. The more agencies in the group, the better the risk. To date, over twenty agencies have joined the group.

Association coverage consists of a major medical health plan, dental, life and disability through the Travelers Group and an alternative health plan HMO of Minnesota.

To be eligible, you must be a paid agency member of MCCA.

Information regarding this coverage can be obtained by calling Doug Olson, Pysick Olson Agency, 446-1281 or Dick Williams, MCCA at 292-1466.

**NEW MEMBERS From Page 4**

Spike Moss  
The New Way

Charlene Myklebust  
Nexus

Lynnette Niemann  
Wright County Probation

Jean Paulson  
Portland House

Tim O'Brien  
Alpha House

Steve Rancour  
Alpha House

Sue Soller  
Alpha House

Sue Scribner  
League of Women Voters

Thomas Zoet  
Washington County Corrections

New Program Member  
Wilder Foundation—Community  
Assistance Program (C.A.P.)

# Newsletter Committee

**Dale Fisher, Chairman 348-4293**

In the heat of the summer, activities have a tendency to slow down. There are fewer meetings and workshops. We head for the woods of our own backyards, anywhere for a change of pace. It's easy to decide "I'll think about this later." In the process, though, this may be the best time for creativity. A chance to formulate plans for the coming year and think through that great idea you had but were too busy to develop.

While you are doing all this great relaxed thinking, keep us in mind. The Happenings will be glad to print information about your program, your people, especially your ideas. Like the entire MCCA, The Happenings is its members. We rely on you. Give us a call, a note, a little of your time.

★ ★ ★ ★ ★ ★ ★ ★ ★ ★

### **SOBERING CARS Cont. From Page 5**

A sealed electronics module in the trunk of the car contains equipment that records the number of attempts and failures of the test, so a judge can determine if the individual is using the system properly.

Any decision by the transportation department for wider use must first confront the inevitable questions: How much will it cost and who will pay for it? Although the 10 hand-built prototype units were expensive, Allen estimates that large-scale production may br-

# MCCA Membership Committee

**Jeff Martin—296-1891**

As the new Chairman of the Membership Committee, I am seeking MCCA members to serve with me. The Board of Directors recently decided a high priority should be placed on recruiting new active members and stimulating more interest in our present members.

Our committee will be searching for ideas, plans, programs, which will encourage both individual and program membership. If you are interested in becoming a committee member, please contact me at the above number.

★ ★ ★ ★ ★ ★ ★ ★ ★ ★

ing the cost of a single unit to below a thousand dollars. Allen and others are reluctant to speculate on who would assume the burden of this cost. One possibility they offer, however, is to give convicted drivers the option of purchasing the system in lieu of fines, driving school, or license suspension.

**James Cavuoto**  
Reprint from *Science 81*,  
July/August 1981.

Minnesota Community Corrections Association  
666 Marshall Avenue  
St. Paul, Minnesota 55102

NON-PROFIT ORG.  
U.S. POSTAGE  
PAID  
PERMIT NO. 1994  
MPLS., MN.